



RV Aranda

CRUISE PLAN

Microplastic intercalibration - POMERO, 2/2021 19.4.2021

Description of the cruise

Aim is to collect microplastic samples from the sediment and surface water to be analysed in SYKE MRC laboratory as well to be sent to Russian and Estonian partners for intercalibration activities. In addition, a training video on microplastic sampling will be made. The cruise is part of POMERO project.

Scientific staff:

Chief scientist: Maiju Lehtiniemi
 SYKE
 SYKE
 SYKE
 SYKE
 SYKE
 SYKE
 SYKE
 SYKE

Altogether 8 persons in scientific staff.

Departure from: HELSINKI
Departure time: Monday 19.04.2021 at 10.00

Cruising speed: 10,0 knots

Arrival to: HELSINKI
Arrival time: Monday 19.04.2021 at 15.09

Duration of the cruise: 0 days 5 h 9 min

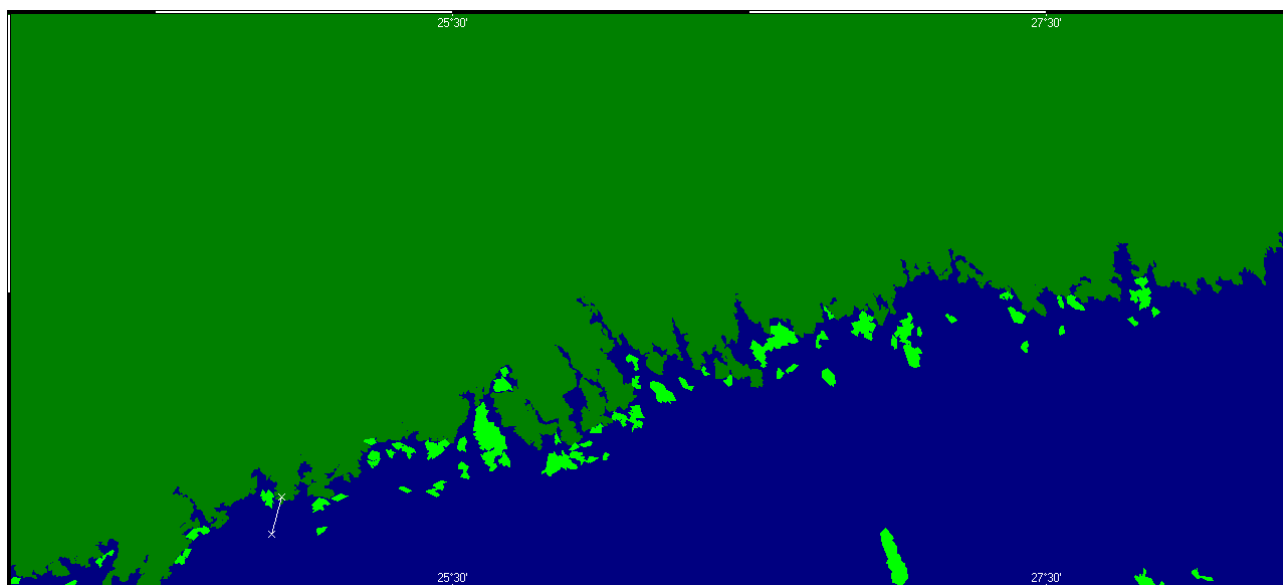
Length of the cruise: 11,60 nautical miles

Number of stations 1. Points with name "P" are just route points without observations.

Route:

Nro	Station	Lat.	Long.	Depth [m]	hh:mm	Arrival dy	dd.mm.yyyy	Durat. hh:mm	Speed knots
0	HELSINKI	60°09.55'	24°55.37'	0	10.00	Mo	19.04.2021	0:00	S 10,0
1	39A	60°04.01'	24°58.81'	41	10.34	Mo	19.04.2021	4:00	S 10,0
2	HELSINKI	60°09.55'	24°55.37'	0	15.09	Mo	19.04.2021	0:00	S 10,0

Route map:



Cruise plan is printed at 07.04.2021 ai 04.40.